

# Leatherhead Theatre Technical Resources

## Sound

Only to be operated by sound engineers approved in advance by The Theatre Technical Department.

<b>Mixing</b>	Allen & Heath - GL 3300 M 40 Channels - 4 groups to stereo output
<b>Control &amp; Delay</b>	Yamaha DM32 DME
<b>Amplification</b>	QSC and Yamaha
<b>Foldback</b>	4 channels with EQ and monitors/side fill boxes.
<b>Playback</b>	American Audio – SD player (Most USB 2 devices) Tascam - MDK 301 Minidisk DENON – DN-C615 – CD and MP3
<b>Audio FX</b>	Yamaha SPX90 multi effects Yamaha SPX900 multi effects
<b>Tie Lines</b>	01 to 40 to Pros wall stage right 01 to 20 to pros wall stage left
<b>Radio Mic's</b>	08 x Sennheiser EW100 G3 with MKE-2 Lavalier microphone
<b>Mic's and Stands</b>	Only a few mic's and stands. Please ask for details.

## Lighting

Only to be operated by LX operators approved in advance by The Theatre Technical Department.

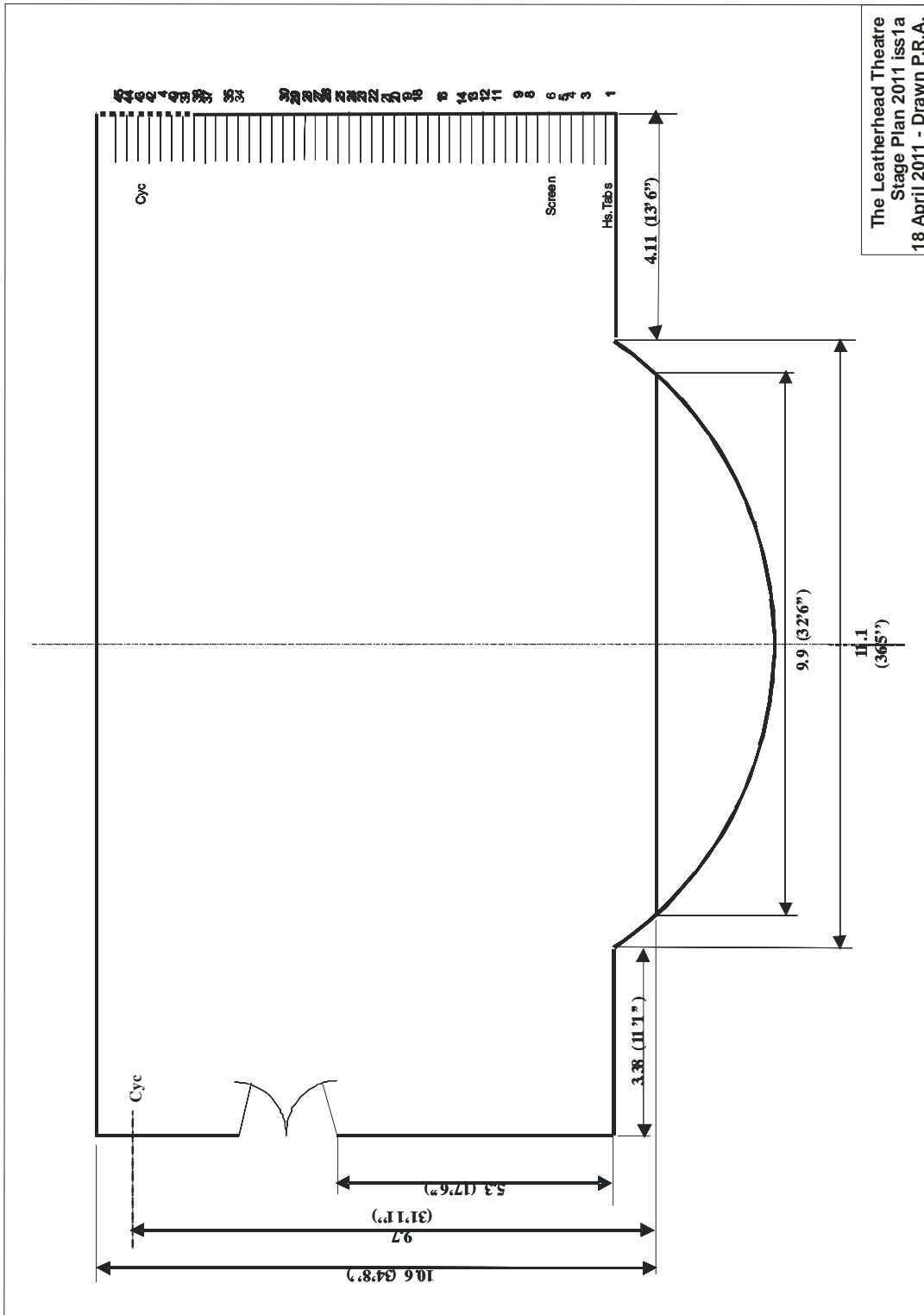
<b>Control</b>	LX Board ETC – ION & 48/96 Express
<b>Dimming</b>	4 x Anytronics Contractor. (96 channels)
<b>Distribution</b>	16a Cform. No hard patch.
<b>Fixtures</b>	08 CCT Silhouette 30 16 CCT Silhouette 15 20 Strand 743 Fresnel's 12 Starletts Fresnel's 10 Strand Cantata 15 PAR 64 Long nose 06 4 Cell Thomas Floods  14 LDR Express 19 scrollers  Gobo holders for profiles Size 'B'
<b>Follow Spot</b>	Robert Juliat – Topaze MSR1200 (No DMX)

## Stage Power

- On stage** 13amp and 16amp C-form sockets S/L, across U/S and S/R.  
 32amp single phase audio supply x 2 (up and down S/R)  
 63amp three phase (S/R or S/L and S/L fly floor level) only one outlet can be used at any time.
- Fly floor** 13amp and 16amp C-form.

## **Stage**

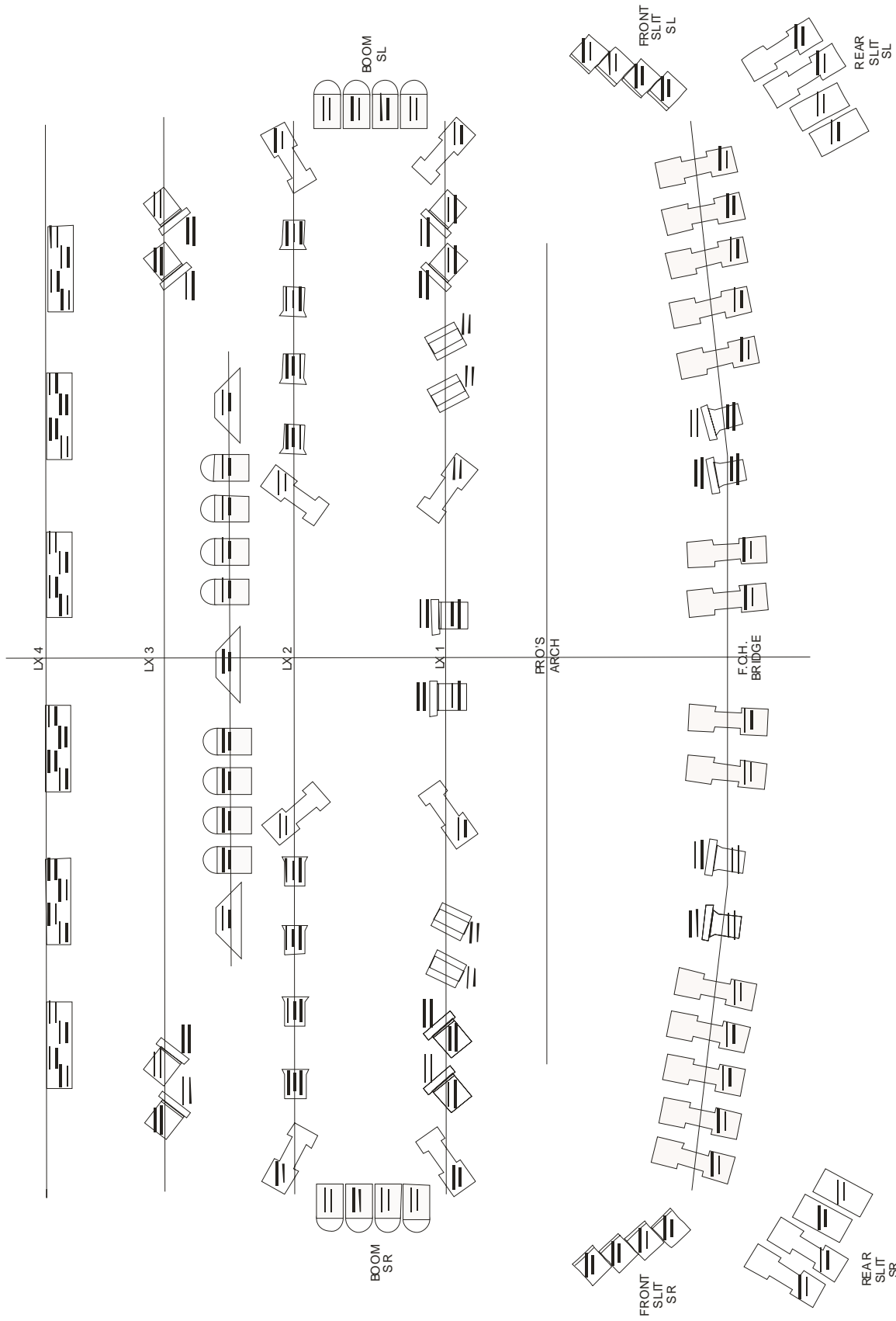
Proscenium arch 11m wide x 4.8m high. Grid height 17m.



**Fly System Counterbalance – Only to be operated by experienced fly men approved in advance by The Theatre Technical Department.**

<u>LEATHERHEAD THEATRE FLYBARS 2011</u>				
Bar No	Fixture		LX No	Availability
45	S/L Black Masking Tabs			Permanent
44	S/R Black Masking Tabs			Permanent
43	Cyclorama			Movable
42		Absent		
41		Absent		
40				Available
39				Available
38				Available
37				Available
36		Absent		
35			LX4	Permanent
34	Border			<
33		Absent		
32		Absent		
31		Absent		
30				Available
29				Available
28				Available
27				Available
26			LX3	<
25		Absent		
24	Border			<
23				Available
22				Available
21				Available
20				Available
19	Hillsong Screen			
18				Available
17				Available
16	Hillsong Movers			
15		Absent		
14			LX2	<
13		Absent		
12	Border			<
11				Available
10		Absent		
9	Hillsong Movers			
8				Available
7				Available
6	Cinema Screen			Permanent
5		Absent		
4			LX1	<
3	Border			<
2		Absent		
1	House Tabs			Permanent

# Lighting Plot



The Leatherhead Theatre  
 Standard LX 2011 iss1a  
 16 April 2011 - Drawn P.R.A.

## **ETC ION LX Desk – Chanel List**

<b>Chanel</b>	<b>DMX</b>	<b>Location</b>	<b>Fixture</b>
1	59	S/R	FOH Bridge Silhouette 30
2	60	S/R	FOH Bridge Silhouette 30
3	61	S/R	FOH Bridge Silhouette 30
4	62	S/R	FOH Bridge Silhouette 30
5	63	S/R	FOH Bridge Silhouette 30
6 pt 1	64	C/S/R	FOH Bridge Starlet/Scroller
6 pt 2	111	C/S/R	FOH Bridge Scroller
7 pt 1	11	C/S	FOH Bridge Starlet/Scroller
7 pt 2	112	C/S	FOH Bridge Scroller
8	12	C/S	FOH Bridge Silhouette 30
9	13	C/S	FOH Bridge Silhouette 30
10	14	C/S	FOH Bridge Silhouette 30
11	15	C/S	FOH Bridge Silhouette 30
12 pt 1	16	C/S	FOH Bridge Starlet/Scroller
12 pt 2	113	C/S	FOH Bridge Scroller
13 pt 1	35	S/L	FOH Bridge Starlet/Scroller
13 pt 2	114	S/L	FOH Bridge Scroller
14	36	S/L	FOH Bridge Silhouette 30
15	37	S/L	FOH Bridge Silhouette 30
16	38	S/L	FOH Bridge Silhouette 30
17	39	S/L	FOH Bridge Silhouette 30
18	40	S/L	FOH Bridge Silhouette 30
23 pt 1	03	S/R	LX1 Starlet/Scroller
23 pt 2	105	S/R	LX1 Scroller
24 pt 1	04	S/R	LX1 Starlet/Scroller
24 pt 2	106	S/R	LX1 Scroller
25 pt 1	05	C/S	LX1 Starlet/Scroller
25 pt 2	107	C/S	LX1 Scroller
26 pt 1	06	C/S	LX1 Starlet/Scroller
26 pt 2	108	C/S	LX1 Scroller
27 pt 1	07	S/L	LX1 Starlet/Scroller
27 pt 2	109	S/L	LX1 Scroller
28 pt 1	08	S/L	LX1 Starlet/Scroller
28 pt 2	110	S/L	LX1 Scroller
33	67	S/R	LX1 Silhouette 15
34	68	C/S/R	LX1 Silhouette 15
35	69	C/S/L	LX1 Silhouette 15
36	70	S/L	LX1 Silhouette 15
37	71	Across	LX1 4 x 400w UV Cannon
38	72	Spare	LX1

<b>Chanel</b>	<b>DMX</b>	<b>Location</b>		<b>Fixture</b>
43	27	2 x 1k	LX2	Starlet – L106
44	28	2 x 1k	LX2	Starlet – L105
45	29	2 x 1k	LX2	Starlet – L139
46	30	2 x 1k	LX2	Starlet – L119
47	31	Spare	LX2	
48	32	Spare	LX2	
53	19	S/R	LX2	Silhouette 15
54	20	C/S/R	LX2	Silhouette 15
55	21	C/S/L	LX2	Silhouette 15
56	22	S/L	LX2	Silhouette 15
57	23	Spare	LX2	
58	24	Spare	LX2	
63 pt 1	51	S/R	LX3	743/Scroller
63 pt 2	101	S/R	LX3	Scroller
64 pt 1	52	S/R	LX3	743/Scroller
64 pt 2	102	S/R	LX3	Scroller
65 pt 1	53	S/L	LX3	743/Scroller
65 pt 2	103	S/L	LX3	Scroller
66 pt 1	54	S/L	LX3	743/Scroller
66 pt 2	104	S/L	LX3	Scroller
67	55	Spare	LX3	
68	56	Spare	LX3	
73	91	LX-FX	Movable	PAR64 inc CP62 – L106
74	92	LX-FX	Movable	PAR64 inc CP62 – L105
75	93	LX-FX	Movable	PAR64 inc CP62 – L139
76	94	LX-FX	Movable	PAR64 inc CP62 – L119
77	95	LX-FX	Movable	Beam FX – O/W
78	96	LX-FX	Movable	2 x Beam FX – O/W
82	33	S/R	F Slit	Pt743 – L106
83	34	S/R	F Slit	Pt743 – L105
84	57	S/R	F Slit	Pt743 – L139
85	58	S/R	F Slit	Pt743 – L119
86	45	S/L	F Slit	Pt743 – L119
87	46	S/L	F Slit	Pt743 – L139
88	47	S/L	F Slit	Pt743 – L105
89	48	S/L	F Slit	Pt743 – L106
92	17	S/R	R Slit	Silhouette 30
93	18	S/R	R Slit	Silhouette 30
94	41	S/R	R Slit	Cantata
95	42	S/R	R Slit	Cantata
96	01	S/L	R Slit	Cantata
97	02	S/L	R Slit	Cantata
98	25	S/L	R Slit	Silhouette 30
99	26	S/L	R Slit	Silhouette 30

<b>Chanel</b>	<b>DMX</b>	<b>Location</b>		<b>Fixture</b>
102	77	S/R	Boom	PAR64 inc CP64 L106
103	78	S/R	Boom	PAR64 inc CP64 L105
104	79	S/R	Boom	PAR64 inc CP64 L139
105	80	S/R	Boom	PAR64 inc CP64 L119
106	81	S/R	Boom	PAR64 inc CP64 L119
107	82	S/R	Boom	PAR64 inc CP64 L139
108	83	S/R	Boom	PAR64 inc CP64 L105
109	84	S/R	Boom	PAR64 inc CP64 L106
114	85	S/R	Boom	10amp Dimmed Practical
115	87	S/R	Boom	10amp Dimmed Practical
116	86	S/L	Boom	10amp Dimmed Practical
117	88	S/L	Boom	10amp Dimmed Practical
122	73	S/R	LX4	Coda Cell 1
123	49	S/L	LX4	Coda Cell 1
124	74	S/R	LX4	Coda Cell 2
125	50	S/L	LX4	Coda Cell 2
126	75	S/R	LX4	Coda Cell 3
127	65	S/L	LX4	Coda Cell 3
128	76	S/R	LX4	Coda Cell 4
129	66	S/L	LX4	Coda Cell 4
134	89	Flood Pipe	Movable	Flood Cell 1
135	90	Flood Pipe	Movable	Flood Cell 2
136	43	Flood Pipe	Movable	Flood Cell 3
137	44	Flood Pipe	Movable	Flood Cell 4
143	2/321 - 338	S/R	H/S/LX	Mac 250 Entour Ext
144	2/221 - 233	C/S/R	H/S/LX	Mac 300
143	2/041 - 058	C/S	H/S/LX	Mac 250 Entour Ext
143	2/061 - 078	C/S	H/S/LX	Mac 250 Entour Ext
144	2/241 - 253	C/S/L	H/S/LX	Mac 300
143	2/101 - 118	S/L	H/S/LX	Mac 250 Entour Ext
151	118	C/S	LX1	Strobe Intensity
152	119	C/S	LX1	Strobe Rate
159	380 - 391		Movable	Golden Scan HPE
160	400 - 411		Movable	Golden Scan HPE

**Stage Tabs** Electrically operated (11 secs) Swipe or flown.

**Safety Curtain** Electrically flown.

**Black Masking** 6 Hard flats. And S/R & S/L side up/down soft mask.

**Up/Mid-stage blacks** Black serge, 1 set with centre over lap.

<b><i>Orchestra Pit/Stage apron</i></b>	Can be electrically per set to 1.4m below auditorium to full stage height. Pit rails must be used when lowered below auditorium level.
<b><i>Prompt desk S/R</i></b>	With talk back to tech. And relay to dressing rooms and most back stage areas.
<b><i>Talk Back</i></b>	4 Belt packs with can's normally positioned on LX board, Sound desk, Fly's and Prompt desk. All can be repositioned.
<b><i>Internet</i></b>	Wi Fi freely available on stage.
<b><i>CAT 5 Network</i></b>	From control room. Please ask.

***Equipment shown in blue is not included in basic theatre hire fee.  
Prices on request.***

Grand Piano  
 Digital Projectors (Various)  
 Follow Spot see lighting spec for details  
 Le Maitre Neutron SX Hazer with DMX unit  
 Please ask if your requirement is not listed

For further information please contact

Paul Ashcroft  
 Technical Production Manager  
 +447950 513261  
[paulrashcroft@btinternet.com](mailto:paulrashcroft@btinternet.com)

We recommend the following companies to assist in your production: -

***Photographic***

Andy Newbold Photographic	Photographic Services	+44(0) 1372383018
---------------------------	-----------------------	-------------------

***Video***

Paul Finlayson M.M.Inst.V.	Video Services	+44(0) 1372 273527
----------------------------	----------------	--------------------

***Sound***

Eurohire Sound and Light Ltd	Rock n Roll PA and Lighting	+44(0) 1256 461234
Dobson Sound Productions Ltd	Theatre Sound Production	+44(0) 20 8545 0202

***Lighting***

PRG Production Group	LX and Production Services	+44(0) 8454 706 400
White Light Ltd	Production Lighting	+44(0) 20 8254 4800

### ***Stage Drapes***

Blackout Supplier of Drapes, Rigging and Starcloth +44(0) 20 8687 8400

### ***Theatre Services***

Showtech Theatrical Supplier Lighting, Sound and Stage effects. +44(0) 1483 892625